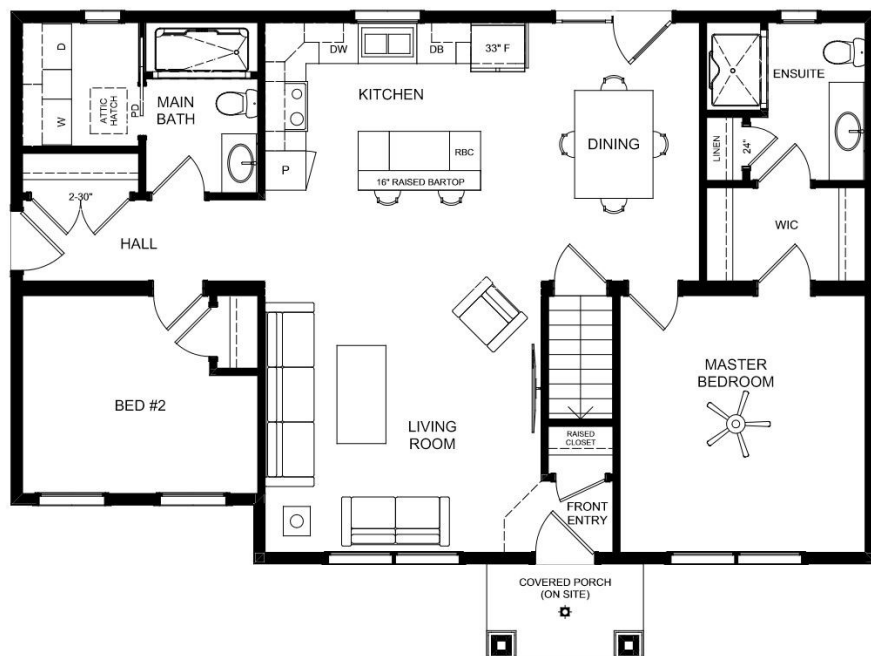


The ARTCRAFT

Craftsman Ranch



44x28/25 Ranch 1219sf / 2bed / 2bath



- Covered porch with dormer accent
- Tapered columns with faux stone
- Double windows with header trim
- Craftsman 3 panel dentil shelf door
- Kitchen with pantry and block island
- Dining nook with garden door
- Master suite with walk-through closet
- Large ensuite vanity and 48" shower
- Spare bedroom with two windows
- Main bath off the side door entrance
- Laundry room with wall/base cabinets

*What a sweet
Craftsman Home!*



110 First Plymouth Rd, Woodstock NB - 1(833)905-7700

www.IronwoodHomesInc.ca - info@ironwoodhomesinc.ca

Shown with options. Talk to your local Ironwood Retailer for specs & details. Not for reproduction.